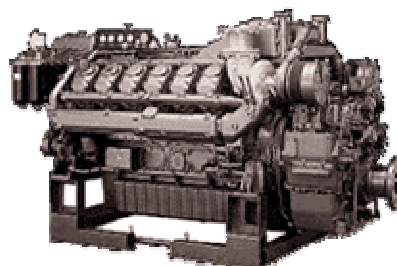

Marine Propulsion Engines for Commercial Craft



- Direct injection, heat exchanger cooling.
- Turbocharger + intercooler.
- 4-valves per cylinder for higher combustion efficiency.
- 12-Vee Cylinder configuration.
- Conform to IMO emissions regulations.

SPECIFICATIONS

Model	12LAK-STE2
Number of cylinders	12-Vee
Bore x stroke (mm)	150x165
Displacement (lit)	34.989
M rating output kW(hp)min ⁻¹	809(1100)/1850
Combustion system	Direct injection
Aspiration	Turbocharger+intercooler
Starting system	Electric starting motor
Cooling system	Heat exchanger
Marine gear	Hydraulic
Dry mass kg(lbs)	5000(11000)[with YX-351]
Dimensions(LxWxH) (mm)	2878.5x1452x1516

S.I.A Ben Dejmaa & CIE
Yanmar-Tunisia.com

Main Office: 220 ,Av. des Martyrs 3000 Sfax-Tunisie
Tunis Branch: 28, Rue de Turquie 1001 Tunis-Tunisie
Tél: +216 71 331 923 - 71 344 667 - **Fax:** +216 71 351 215